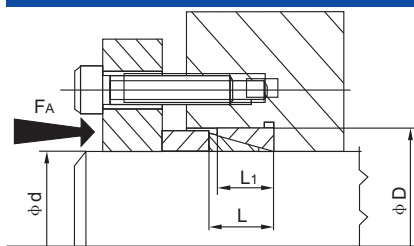


Z1型胀紧套

Type Z1 Locking device



推荐安装尺寸:
名义尺寸小于等于38mm:
轴h6 毂H7
名义尺寸大于等于40mm:
轴h8 毂H8

THE DIMENSION TO FIX(SUGGESTION):
Nominal dimension less than 38mm:
Shaft: h6 hub: H7
Nominal dimension less than 40mm:
Shaft: h8 hub: H8

尺寸 DIMENSIONS				加载的 轴向压力 Loaded Axial Force	传递的轴向力 Transmitted Axial Force	传递扭矩 Transmitted Torque	接触面压强 Contact Pressure		重量 weight
Φd mm	ΦD mm	L mm	L1 mm				轴 Shaft P N/mm ²	毂 Hub P1 N/mm ²	
8	11	4.5	3.7	9.1	1.09	4.3	98	72	0.01
10	13	4.5	3.7	12.1	1.37	6.9	98	75	0.01
12	15	4.5	3.7	12.4	1.64	9.8	98	78	0.01
13	16	4.5	3.7	12.7	1.80	12	98	79	0.01
14	18	6.3	5.3	20.4	2.74	19.2	98	76	0.01
15	19	6.3	5.3	23.5	2.94	22.1	98	77	0.01
16	20	6.3	5.3	23.9	3.14	25.1	98	78	0.01
17	21	6.3	5.3	24.2	3.33	28.3	98	79	0.01
18	22	6.3	5.3	24.8	3.53	31.8	98	80	0.01
19	24	6.3	5.3	29.1	3.72	35.3	98	77	0.01
20	25	6.3	5.3	29.5	3.92	39.2	98	78	0.01
22	26	6.3	5.3	28.3	4.31	47	98	83	0.01
24	28	6.3	5.3	29.4	4.70	56.8	98	84	0.01
25	30	6.3	5.3	31.8	4.90	60.8	98	81	0.01
28	32	6.3	5.3	31.9	5.49	76.4	98	86	0.01
30	35	6.3	5.3	34.8	5.88	88.2	98	84	0.01
32	36	6.3	5.3	35.9	6.27	100	98	87	0.01
35	40	7.0	6.0	44.8	7.74	136	98	86	0.02
36	42	7.0	6.0	47.3	7.94	144	98	84	0.02
38	44	7.0	6.0	48.8	8.43	160	98	84	0.02
40	45	8.0	6.6	57.6	9.75	195	98	87	0.02
42	48	8.0	6.6	61.4	10.30	216	98	86	0.03
45	52	10.0	8.6	90.3	14.30	321	98	85	0.04
48	55	10.0	8.6	92.7	15.30	367	98	85	0.05
50	57	10.0	8.6	94.7	15.90	397	98	86	0.05
55	62	10.0	8.6	99.7	17.40	480	98	87	0.05
56	64	12.0	10.4	125.6	21.60	603	98	86	0.06
60	68	12.0	10.4	130.9	23.00	692	98	86	0.07
63	71	12.0	10.4	134.6	24.20	764	98	87	0.08
65	73	12.0	10.4	134.9	25.00	813	98	87	0.09
70	79	14.0	12.2	172.4	31.60	1110	98	87	0.11
71	80	14.0	12.2	174.0	32.00	1140	98	87	0.12
75	84	14.0	12.2	185.7	33.80	1260	98	87	0.12
80	91	17.0	15.0	247.1	44.10	1770	98	86	0.19
90	101	17.0	15.0	266.2	50.00	2240	98	87	0.22
100	114	21.0	18.7	370.8	69.60	3450	98	86	0.38
110	124	21.0	18.7	406.1	76.40	4170	98	87	0.41
120	134	21.0	18.7	432.0	83.30	4950	98	88	0.45
130	148	28.0	25.3	640.8	122.00	7840	98	86	0.85
140	158	28.0	25.3	676.5	131.00	9110	98	87	0.91

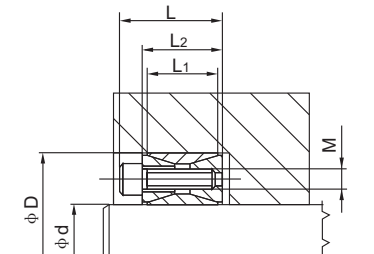
◇ 订货描述示例:

Order form:

Z1	25×25
规格与型号 Size/type of joint	内孔×外径 Inside bore×Outside path

Z2型胀紧套

Type Z2 Locking device



推荐安装尺寸:

轴h8

毂H8

THE DIMENSION TO FIX(SUGGESTION):

SHAFT: h8

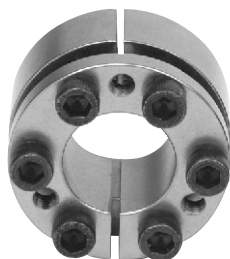
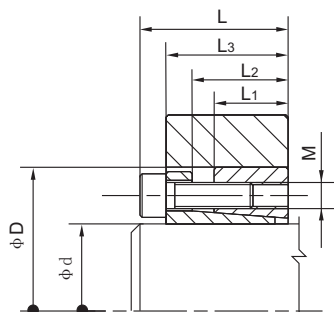
HUB: H8

尺寸 DIMENSIONS					传递的轴向力 Transmitted Axial Force	传递扭矩 Transmitted Torque	接触面压强 Contact Pressure		DIN912-12.9级锁紧螺钉 Locking Screws DIN912-12.9			重量 weight
φd mm	ΦD mm	L1 mm	L2 mm	L mm			轴 Shaft P N/mm ²	毂 Hub P1 N/mm ²	数量 Qty.	M规格 Size	锁紧扭矩 Tightening Torque Ts Nm	
19	47	17	20	26	31	298	286	116	8	M6×18	14.9	0.20
20	47	17	20	26	31	313	272	116	8	M6×18	14.9	0.24
22	47	17	20	26	31	345	247	116	8	M6×18	14.9	0.23
24	50	17	20	26	35	424	255	123	9	M6×18	14.9	0.25
25	50	17	20	26	35	441	245	123	9	M6×18	14.9	0.25
28	55	17	20	26	39	549	243	124	10	M6×18	14.9	0.30
30	55	17	20	26	39	588	227	124	10	M6×18	14.9	0.29
32	60	17	20	26	47	752	255	136	12	M6×18	14.9	0.33
35	60	17	20	26	47	822	233	136	12	M6×18	14.9	0.32
38	65	17	20	26	55	1042	250	146	14	M6×18	14.9	0.35
40	65	17	20	26	55	1097	238	146	14	M6×18	14.9	0.34
42	75	20	24	32	83	1740	291	163	12	M8×22	35	0.58
45	75	20	24	32	83	1864	271	163	12	M8×22	35	0.57
48	80	20	24	32	83	1988	254	153	12	M8×22	35	0.60
50	80	20	24	32	83	2071	244	153	12	M8×22	35	0.60
55	85	20	24	32	97	2658	259	168	14	M8×22	35	0.63
60	90	20	24	32	97	2900	238	158	14	M8×22	35	0.69
65	95	20	24	32	110	3587	250	171	16	M8×22	35	0.73
70	110	24	28	38	153	5345	268	171	14	M10×25	69	1.26
75	115	24	28	38	153	5727	250	163	14	M10×25	69	1.33
80	120	24	28	38	153	6108	235	156	14	M10×25	69	1.40
85	125	24	28	38	175	7417	252	172	16	M10×25	69	1.49
90	130	24	28	38	175	7854	238	165	16	M10×25	69	1.53
95	135	24	28	38	196	9326	254	179	18	M10×25	69	1.62
100	145	26	33	45	227	11362	258	178	14	M12×30	123.3	2.01
110	155	26	33	45	227	12498	234	166	14	M12×30	123.3	2.15
120	165	26	33	45	260	15578	245	178	16	M12×30	123.3	2.35
130	180	34	38	50	325	21095	217	156	20	M12×35	123.3	3.51
140	190	34	38	50	357	24993	221	163	22	M12×35	123.3	3.85
150	200	34	38	50	390	29217	225	169	24	M12×35	123.3	4.07
160	210	34	38	50	422	33756	229	174	26	M12×35	123.3	4.30
170	225	38	44	58	465	39483	212	160	22	M14×40	187	5.78
180	235	38	44	58	507	45606	218	167	24	M14×40	187	6.05
190	250	46	52	66	591	56163	199	152	28	M14×45	187	8.25
200	260	46	52	66	633	63342	203	156	30	M14×45	187	8.65
220	285	50	56	72	745	81960	200	154	26	M16×50	290	11.22
240	305	50	56	72	860	103162	211	166	30	M16×50	290	12.20
260	325	50	56	72	974	126669	221	177	34	M16×50	290	13.20
280	355	60	66	84	1124	157339	197	156	32	M16×60	400	19.20

◇ 订货描述示例:

Order form:

Z2	25×50
规格与型号 Size/type of joint	内孔×外径 Inside bore×Outside path



推荐安装尺寸:

轴h8

毂H8

THE DIMENSION TO FIX(SUGGESTION):

SHAFT: h8

HUB: H8

尺寸 DIMENSIONS						传递的 轴向力 Transmitted Axial Force	传递扭矩 Transmitted Torque	接触面压强 Contact Pressure		DIN912-12.9级锁紧螺钉 Locking Screws DIN912-12.9			重量 weight
Φd mm	ΦD mm	L1 mm	L2 mm	L3 mm	L mm	Ft KN	Mt Nm	轴 Shaft P N/mm ²	毂 Hub P1 N/mm ²	数量 Qty.	M规格 Size	锁紧扭矩 Tightening Torque Ts Nm	
19	47	17	22	28	34	29	273	262	106	5	M6×20	13	0.29
20	47	17	22	28	34	29	287	249	106	5	M6×20	13	0.29
22	47	17	22	28	34	29	316	227	106	5	M6×20	13	0.27
24	50	17	22	28	34	34	413	249	120	6	M6×20	13	0.31
25	50	17	22	28	34	34	431	239	120	6	M6×20	13	0.30
28	55	17	22	28	34	34	482	213	109	6	M6×20	13	0.36
30	55	17	22	28	34	34	517	199	109	6	M6×20	13	0.34
32	60	17	22	28	34	46	734	249	133	8	M6×20	13	0.40
35	60	17	22	28	34	46	803	227	133	8	M6×20	13	0.38
38	65	17	22	28	34	46	872	210	122	8	M6×20	13	0.42
40	65	17	22	28	34	46	918	199	122	8	M6×20	13	0.41
42	75	20	25	33	41	74	1563	261	146	7	M8×25	32	0.72
45	75	20	25	33	41	74	1674	244	146	7	M8×25	32	0.70
50	80	20	25	33	41	74	1860	219	137	7	M8×25	32	0.76
55	85	20	25	33	41	85	2340	228	148	8	M8×25	32	0.82
60	90	20	25	33	41	85	2553	209	139	8	M8×25	32	0.88
65	95	20	25	33	41	96	3110	217	149	9	M8×25	32	0.94
70	110	24	30	40	50	138	4838	243	154	8	M10×30	65	2.10
75	115	24	30	40	50	138	5184	226	148	8	M10×30	65	2.20
80	120	24	30	40	50	138	5530	212	142	8	M10×30	65	2.30
85	125	24	30	40	50	156	6610	225	153	9	M10×30	65	2.40
90	130	24	30	40	50	156	6998	212	147	9	M10×30	65	2.60
95	135	24	30	40	50	173	8208	223	157	10	M10×30	65	2.70
100	145	26	32	44	56	195	9742	221	152	8	M12×35	110	3.70
110	155	26	32	44	56	195	10716	201	143	8	M12×35	110	4.0
120	165	26	32	44	56	219	13154	207	151	9	M12×35	110	4.30
130	180	34	40	52	64	292	18996	195	141	12	M12×35	110	5.90
140	190	34	40	54	68	291	20336	180	133	9	M14×40	170	6.30
150	200	34	40	54	68	323	24211	187	140	10	M14×40	170	6.70
160	210	34	40	54	68	355	28408	192	147	11	M14×40	170	7.30
170	225	44	50	64	78	387	32929	153	115	12	M14×40	170	7.95
180	235	44	50	64	78	387	34866	144	110	12	M14×40	170	8.30

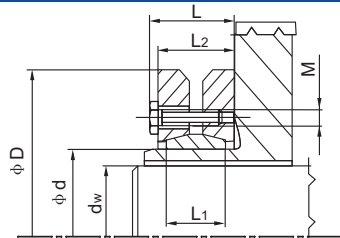
◇ 订货描述示例:

Order form:

Z ₃	25×50
规格与型号 Size/type of joint	内孔×外径 Inside bore×Outside path

Z7B型胀紧套

Type Z7B Locking device



推荐安装尺寸:

轴h8

THE DIMENSION TO FIX(SUGGESTION):

SHAFT: h8

尺寸 DIMENSIONS							传递的 轴向力 Transmitted Axial Force	传递扭矩 Transmitted Torque	接触压强 Contact Pressure	DIN931-10.9级锁紧螺钉 Locking Screws DIN931-10.9			重量 weight
Φd mm	ΦD mm	Φdw mm	L1 mm	L2 mm	L mm	c(dw-d1) mm	Ft KN	Mt Nm	轴 Shaft P N/mm ²	数量 Qty.	M规格 Size	锁紧扭矩 Tightening Torque Ts Nm	
24	50	19 20 21	14	19.5	23	0.017	15.0 18.5 21.0	162 200 238	272.0	6	M5×18	4.9	0.2
30	60	24 25 26	16	21.5	25	0.017	15.7 23.7 26.7	285 323 361	221.0	7	M5×18	4.9	0.3
36	72	28 30 31	18	23.5	27.5	0.032	27.0 38.0 43.0	418 542 599	292.0	5	M6×20	11.8	0.4
44	80	32 35 36	20	25.5	29.5	0.032	44.0 49.0 54.0	589 741 817	301.0	7	M6×20	11.8	0.6
50	90	38 40 42	22	27.5	31.5	0.032	48.8 58.8 69.0	893 1102 1311	275.0	8	M6×25	11.8	6.8
55	100	42 45 48	23	30.5	34.5	0.032	48.0 61.7 77.0	1102 1444 1786	239.0	8	M6×25	11.8	1.1
62	110	48 50 52	23	30.5	34.5	0.048	69.0 80.9 90.0	1758 2090 2280	265.0	10	M6×25	11.8	1.2
68	115	50 55 60	23	30.5	34.5	0.048	71.2 80.9 95.7	1900 2375 2993	242.0	10	M6×25	11.8	1.4
75	138	55 60 65	25	32.5	37.8	0.048	94.4 111.0 126.0	2375 3040 3753	259.0	7	M8×30	29.4	1.2
80	145	60 65 70	25	32.5	37.8	0.048	99.3 115.0 130.0	3040 3705 4370	243.0	7	M8×30	29.4	1.9
90	155	65 70 75	30	39	44.3	0.048	141.0 160.0 178.0	4513 5700 6888	257.0	10	M8×35	29.4	3.3
100	170	70 75 80	34	44	49.3	0.048	163.0 182.0 202.0	6555 7125 8550	245.0	12	M8×35	29.4	4.7
110	185	75 80 85	39	50	56.4	0.048	185.0 207.0 221.0	6840 8550 10260	232.0	9	M10×40	57.8	5.9
125	215	85 90 95	42	54	60.4	0.069	240.0 262.0 285.0	10450 12350 14250	253.0	12	M10×40	57.8	8.3
140	230	95 100 105	46	60.5	68	0.069	308.0 331.0 357.0	14345 16720 19095	251.0	10	M12×45	98	10
155	265	105 110 115	50	64.5	72	0.069	366.0 392.0 417.0	20900 23750 26600	250.0	12	M12×50	98	15
165	290	115 120 125	56	71	81	0.069	513.0 544.0 564.0	29450 33250 37050	263.0	8	M16×55	245	22
175	300	125 130 135	56	71	81	0.079	576.0 630.0 666.0	34200 38950 45000	248.0	8	M16×55	250	22

◇ 订货描述示例:

Order form:

Z7B	50×90
规格与型号	内孔×外径
Size/type of joint	Inside bore×Outside path